

# Pre-Chat



Iowa STEM  
@IowaSTEM

How do you make connections between local businesses & your students in your classroom? What challenges do you face when making these connections? Discuss your challenges & strategies in tonight's STEM Twitter Chat!

Don't forget to log in tonight at 8pm to join.

[#IASTEMChat](#)

**GREATNESS FROM IOWANS** | **GOVERNOR'S STEM ADVISORY COUNCIL**  
dedicated to building a strong STEM education foundation for all Iowans

**Live Twitter Chat - Tuesday, July 14 at 8:00 PM**

"Connecting Local Businesses with Tomorrow's Workforce in Today's Schools"

**HOW TO**

- In Twitter, follow @IowaSTEM
- Use the reply icon to answer.
- Use A1, A2, A3, A4 in your answer so we know which Q1-4 you are answering.
- Tag all tweets with #IASTEMchat
- Hashtag your grade level and subject #elem #MS #HS
- Hit refresh often to see new posts.

**TOPICS**

- What value do you see in school-business partnerships?
- What obstacles need to be overcome for school-business partnerships and work-based learning to thrive, expand?
- What strategies are there to navigate hurdles to school-business partnerships and work-based learning expansion?
- How can the STEM Council help strengthen collaboration between schools and businesses?

**GOAL:** To connect STEM educators and families to each other and to ideas for growing through this period of disruption in our lives.

1:00 PM · Jul 14, 2020 · [Falcon Social Media Management](#)

[View Tweet activity](#)

2 Retweets 5 Likes



Iowa STEM  
@IowaSTEM

[#IASTEMchat](#) will begin in 5 minutes!

7:55 PM · Jul 14, 2020 · [TweetDeck](#)

[View Tweet activity](#)

1 Like



Iowa STEM  
@IowaSTEM

**GREATNESS FROM IOWANS** | **GOVERNOR'S STEM ADVISORY COUNCIL**  
dedicated to building a strong STEM education foundation for all Iowans

**Live Twitter Chat - Tuesday, July 14 at 8:00 PM**

"Connecting Local Businesses with Tomorrow's Workforce in Today's Schools"

**HOW TO**

- In Twitter, follow @IowaSTEM
- Use the reply icon to answer.
- Use A1, A2, A3, A4 in your answer so we know which Q1-4 you are answering.
- Tag all tweets with #IASTEMchat
- Hashtag your grade level and subject #elem #MS #HS
- Hit refresh often to see new posts.

**TOPICS**

- What value do you see in school-business partnerships?
- What obstacles need to be overcome for school-business partnerships and work-based learning to thrive, expand?
- What strategies are there to navigate hurdles to school-business partnerships and work-based learning expansion?
- How can the STEM Council help strengthen collaboration between schools and businesses?

**GOAL:** To connect STEM educators and families to each other and to ideas for growing through this period of disruption in our lives.

7:59 PM · Jul 14, 2020 · [TweetDeck](#)

[View Tweet activity](#)

# Introductions



**Iowa STEM**  
@IowaSTEM

Welcome to the [#IASTEMchat](#)! Our goal tonight is to connect STEM educators and communities to each other and to ideas, specifically related to school-business partnerships. Reply to this tweet and introduce yourself and share your role in ed.

8:00 PM · Jul 14, 2020 · [TweetDeck](#)

||| View Tweet activity

9 Likes



**Jeffrey Weld** @JdWeld · Jul 14

Replying to [@IowaSTEM](#)

'been waiting for this topic! Directing the IA. Gov.'s STEM Advisory Council - Jeff Weld [#IASTEMchat](#)



1

5



**SC Iowa STEM Region** @SC\_Iowa\_STEM · Jul 14

Replying to [@IowaSTEM](#)

Hi everyone! Sarah Derry, South Central STEM Region Manager. Supporting educators and businesses to help connect learners to jobs here in Iowa. [#IASTEMchat](#)



1

4



**Rob Denson** @DMACCPres · Jul 14

Replying to [@IowaSTEM](#)

Community College Intermediaries and Work-Based Learning Coordinators can help make school-learning-business connections. Call your local Community College.



1

2



**KariJ** @KariJ2012 · Jul 14

Replying to [@IowaSTEM](#)

Good evening! Thank you for joining tonight's chat! - Kari Britain, STEM Council Program Manager



1

1



**Rob Denson** @DMACCPres · Jul 14

Replying to [@IowaSTEM](#)

Schools are very interested in partnering with business to create work-based learning opportunities for students.



1

1



**Tanya Hunt** @TanyaHu0907 · Jul 14

Replying to [@IowaSTEM](#)

Hello! Tanya Hunt, Project Coordinator for the STEM Advisory Council.



1

1



**Caroline Rankin** @clgrankin · Jul 14

Replying to [@IowaSTEM](#)

Good evening! Carrie Rankin, Associate Director of the Iowa STEM Council. Welcome all!



1

1



**Laura Miner** @lauralynnminer · Jul 14

Replying to [@IowaSTEM](#)

Internship Coordinator, Workplace Learning Connection - Kirkwood Comm. College.



1

1



# Q1: What value do you see in school-business partnerships?



Iowa STEM  
@IowaSTEM

Q1: What value do you see in school-business partnerships? #IASTEMchat



8:05 PM · Jul 14, 2020 · TweetDeck

View Tweet activity

1 Retweet and comment 2 Likes



Jeffrey Weld @JdWeld · Jul 14

Replying to @IowaSTEM

A1 - the STEM "brand" has rapidly evolved to be about connecting learning to communities, careers. School partnerships with employers are only going to get bigger for all sorts of good reasons. #IASTEMchat



5



SC Iowa STEM Region @SC\_Iowa\_STEM · Jul 14

Replying to @IowaSTEM

A1:

students = real world connections

educators = content relevance and authentic application

business = attract future workforce

#IASTEMcha



4



Cedar Falls CAPS @CF\_CAPS · Jul 14

Replying to @IowaSTEM

Businesses can provide the real world opportunities and expertise needed for authentic learning experiences. win win scenarios between ed and biz creates a community echo system focused on developing tomorrow's workforce.



1



Caroline Rankin @clgrankin · Jul 14

Replying to @IowaSTEM

Helping to build connections in communities that might not otherwise be known. #IAstem



1



5



Mike Kuennen @MikeSKuennen · Jul 14

Imagine students being unaware of ALL the career opportunities available locally.... #IASTEMchat



1



6



Tanya Hunt @TanyaHu0907 · Jul 14

I appreciate how Iowa BIG North engages students in their passions and provides them opportunities to explore in their own backyard!



1



1



Mike Kuennen @MikeSKuennen · Jul 14

Students are experiencing commuting in their IBN experiences which will offer more options as they graduate, too. #IASTEMchat



2





**Mike Kuennen**  
@MikeSKuennen

Hello, everyone. A1: I think what we offer @IowaBIGNorth is value. We want to be of service to our business partners, and in turn our community.



8:08 PM · Jul 14, 2020 · [Twitter for iPhone](#)

1 Like



**Mike Kuennen** @MikeSKuennen · Jul 14  
Replying to @MikeSKuennen  
[#IASTEMchat](#)



**Tanya Hunt**  
@TanyaHu0907

A1 Our 58 STEM BEST models across the state of Iowa can attest to the value of school-business partnerships for students, partners and communities. Building a future for Iowa through partnerships! [#STEMBEST](#) [#IASTEMchat](#)

8:13 PM · Jul 14, 2020 · [Twitter Web App](#)

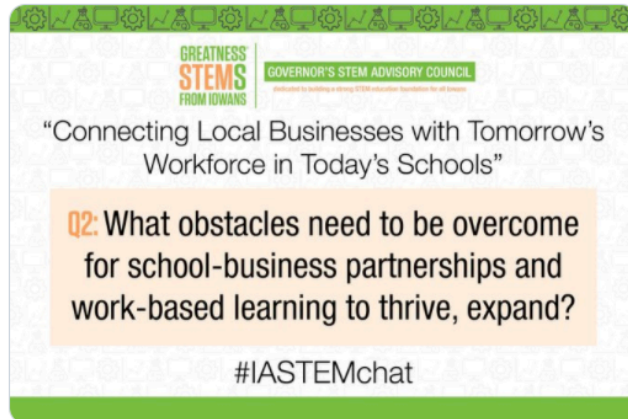
1 Retweet 3 Likes

## Q2: What obstacles need to be overcome for school-business partnerships and work-based learning to thrive, expand?



Iowa STEM  
@IowaSTEM

Q2: What obstacles need to be overcome for school-business partnerships and work-based learning to thrive, expand? #IASTEMchat



8:20 PM · Jul 14, 2020 · TweetDeck

||| View Tweet activity

1 Like



Jeffrey Weld @JdWeld · Jul 14

Replying to @IowaSTEM

A2 - Many pioneers crushing obstacles across Iowa - @STEMBEST. Really exciting are those that engage teachers and their students across disciplines -- Math, Science, History, PE, English, etc. #IASTEMchat



5



Juan Garcia @juang353 · Jul 14

Replying to @IowaSTEM

A2: Also, engaging parents/guardians in the conversation, when they see the value of school-business working together, magic happens! #IASTEMchat #EdEquity #DiversityRocks



7



SC Iowa STEM Region @SC\_Iowa\_STEM · Jul 14

Yes!



1



Mike Kuennen @MikeSKuennen · Jul 14

Replying to @IowaSTEM

A2: The perception that the majority of learning for students occurs in the classroom. Our communities provide AUTHENTIC learning environments and problem-solving opportunities!! #IASTEMchat



8



Cedar Falls CAPS @CF\_CAPS · Jul 14

Replying to @IowaSTEM

In order for these partnerships to thrive we have to create win win scenarios. Businesses have to see value in the interactions for long term success. Recognition by colleges for these type of experiences wouldn't hurt either. Portfolio vs test scores.



3



Juan Garcia @juang353 · Jul 14

Replying to @IowaSTEM

A2: We need to make sure everyone sees the value of STEM, identifying the students who have the math and science scores/readiness and have not opted to explore a STEM career @IowaSTEM #EdEquity #DiversityRocks #RemovingBarriers



4





**Christian Velasquez** @chrisv250 · Jul 14



Replying to [@IowaSTEM](#)

Both sides need to be open to engagement. Someone has to ask for the conversation. There is so much value to this. ~90% of the students that go into the workforce will work at a private business.



**Caroline Rankin** @clgrankin · Jul 14



Replying to [@IowaSTEM](#)

Getting to the "why" of what you're doing for school-business partnerships, what you'd like to be doing, and how to make it happen, is often a challenge. Break them down into bite size pieces and find out who needs to help with each step.



**Caroline Rankin** @clgrankin · Jul 14



Replying to [@IowaSTEM](#)

Getting all the right people in the right seats 'on the bus' to get the conversations going. A leader to keep activity moving forward  
[#IASTEMChat](#)



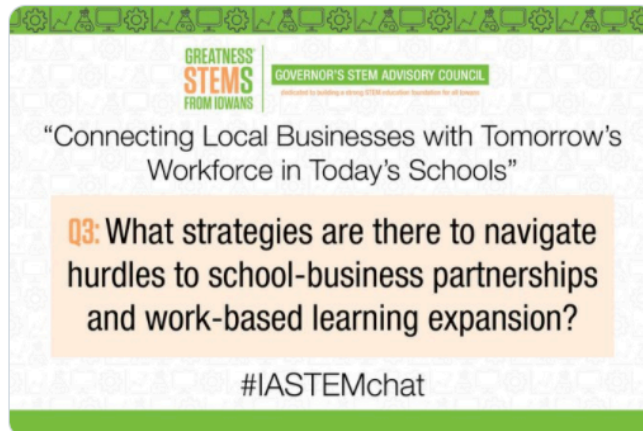


### Q3: What strategies are there to navigate hurdles to school-business partnerships and work-based learning expansion?



Iowa STEM  
@IowaSTEM

Q3: What strategies are there to navigate hurdles to school-business partnerships and work-based learning expansion? #IASTEMchat



8:35 PM · Jul 14, 2020 · TweetDeck

View Tweet activity



Jeffrey Weld @JdWeld · Jul 14

Replying to @IowaSTEM

A3 - 58 (with more coming soon...) bold school-business partnerships across Iowa, of all shapes, sizes, grade levels, each commit to mentoring those coming up. Find 'em here [iowastem.gov/STEMBEST](http://iowastem.gov/STEMBEST) or contact project manager Tanya at [Hunt@IowaSTEM.gov](mailto:Hunt@IowaSTEM.gov) #IASTEMchat



3



SC Iowa STEM Region @SC\_Iowa\_STEM · Jul 14

Replying to @IowaSTEM

A3: Provide examples of existing partnerships. Ex: STEM B.E.S.T. [iowastem.gov/STEMBEST](http://iowastem.gov/STEMBEST) and the IA Clearinghouse for Workbased Learning [clearinghouse.futurereadyiowa.gov/success-stories](http://clearinghouse.futurereadyiowa.gov/success-stories). #IASTEMChat



3



Tanya Hunt @TanyaHu0907 · Jul 14

Replying to @IowaSTEM

A3 Use the resources around you and the Governor's STEM Council can be one! My hope is to provide authentic learning opportunities to all students, business and communities across Iowa. Reach out to me at [hunt@IowaSTEM.gov](mailto:hunt@IowaSTEM.gov)! #STEMBEST



3



Juan Garcia @juang353 · Jul 14

Replying to @IowaSTEM

Let's showcase more of our current success stories. When we hear more of the story being told by the students and businesses being impacted we will continue to expand and attract others to join us! #IASTEMchat



3



Cedar Falls CAPS @CF\_CAPS · Jul 14

Replying to @IowaSTEM

Listening to biz on what their needs are and finding ways to fulfill those needs while providing quality, work-based learning opportunities for students. Schools acting and modeling servant leadership through community engagement.



3





**Mike Kuennen** @MikeSKuennen · Jul 14



Replying to @IowaSTEM

A3: Having supportive administrators that encourage taking risks  
@sarah\_updegraff @JAYJURRENS Also the collaboration with @IowaBIG  
@STEMInnovator @WaukeeAPEX @NoBoBIG (just to name a few) has  
been invaluable. #IASTEMchat



**Caroline Rankin** @clgrankin · Jul 14



Replying to @IowaSTEM

Sharing best practices more often, playbooks, ideas. Possibly make this  
a district or even regional PD day?



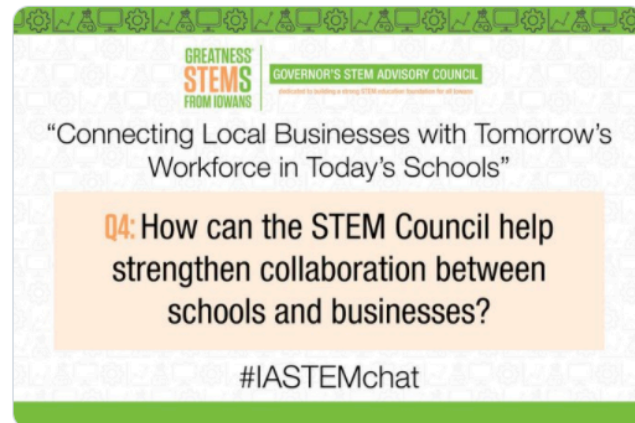


## Q4: How can the STEM Council help strengthen collaboration between schools and businesses?



Q4: How can the STEM Council help strengthen collaboration between schools and businesses?

#IASTEMchat



8:50 PM · Jul 14, 2020 · TweetDeck

|| View Tweet activity

3 Likes



**Cedar Falls CAPS** @CF\_CAPS · Jul 14

Replying to @IowaSTEM

Collaborating/organizing partnerships between biz & ed takes a lot of time & energy to do well. Finding funding needed to properly execute these partships is rare. One way is to encourage the state to allocate funding for coordinating efforts rather than brick/morter & equipment

1



3



**Cedar Falls CAPS** @CF\_CAPS · Jul 14

@IowaSTEM is one of the few organizations with grant opportunities for staffing which many of the innovative programs in the state of Iowa needed to get started. We appreciate all @IowaSTEM does and continues to do in driving work-based learning in the state.



3



**Mike Kuennen** @MikeSKuennen · Jul 14

Replying to @IowaSTEM

A4: We can't thank @IowaSTEM enough for everything they do for students and staff throughout Iowa! @IowaBIGNorth would not be where we are today without your team! #IASTEMchat



5



**Caroline Rankin** @clgrankin · Jul 14

Replying to @IowaSTEM

Would peer-to-peer conversations between businesses help promote building of relationships with schools?



**SDNelson** @sara\_d\_nelson · Jul 14

Replying to @IowaSTEM

I always appreciate seeing and hearing about models of how these experiences could be set-up.



4





**Juan Garcia** @juang353 · Jul 14

Replying to @IowaSTEM

Let's create a toolkit that it is up to date with all the resources available for schools, business, students and families, sharing experiences and best practices. If it is available in other languages we will get underrepresented students to see their own potential #IASTEMchat



1



1



5



**SDNelson** @sara\_d\_nelson · Jul 14

Thank you for mentioning multiple languages!



1



3



**Juan Garcia** @juang353 · Jul 14

As an immigrant and former ELL student myself, we need to #RemoveBarriers to increase opportunities for ALL 👍 #EdEquity



1



**Gordon Dahlby**

@gdahlby

#IASTEMchat A4: Get students in outside venues such as water/air quality, testing, chem, aquatic health, drinking H2O testing, impact of 2%+ farm native vegetation erosion strips & creek buffers on insects/animals/birds w hypothesis testing & active mitigation r engaging

9:00 PM · Jul 14, 2020 · [Twitter Web App](#)

1 Like

## Conclusion



**Iowa STEM**  
@IowaSTEM



Thank you for joining us tonight! We will continue hosting a monthly Twitter chat on the second Tuesday of every month. The next chat will be held on August 11. We look forward to chatting again!

9:00 PM · Jul 14, 2020 · [TweetDeck](#)

---

View Tweet activity

---

**2** Retweets   **8** Likes



**Iowa STEM**  
@IowaSTEM



Educators, feel free to join our Educator Facebook Group to continue the conversation.

[facebook.com/groups/IowaSTEMchat](https://facebook.com/groups/IowaSTEMchat) #IASTEMchat

9:01 PM · Jul 14, 2020 · [TweetDeck](#)

---

View Tweet activity

---

**1** Retweet   **1** Like